

# N / NSW sliders

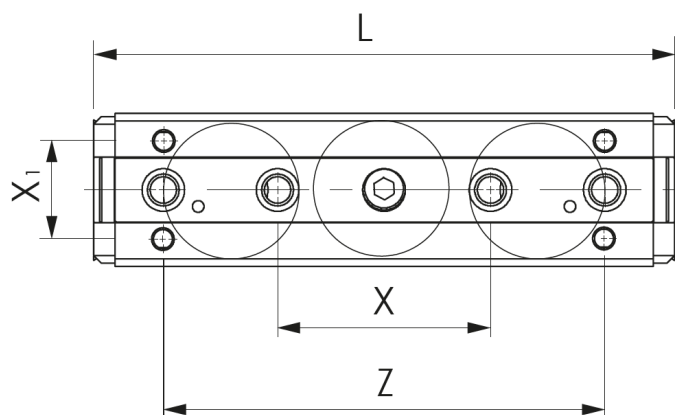
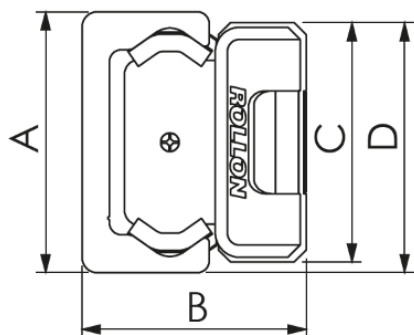
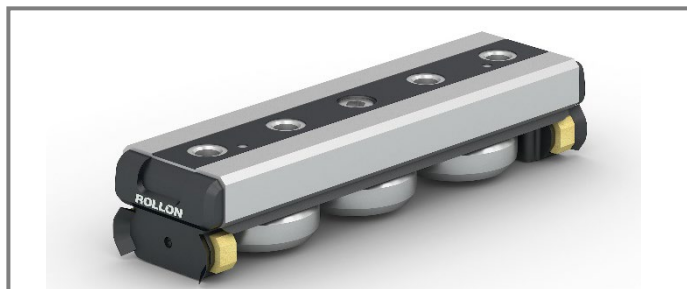


## Comparison table

N-slider



NSW-slider



Rail size A [mm]	B [mm]		C [mm]		D [mm]		N° of rollers	L [mm]		Z [mm]		X [mm]		X1 [mm]	
	N	NSW	N	NSW	N	NSW		N	NSW	N	NSW	N	NSW	N	NSW
18	16.5	16.5	17.6	16	18.3	17	3	74	78	52	52	-	20	-	-
28	24	23.9	26.5	24.9	28	26.45	3	124	108	78	78	-	35	-	-
43	37	37	40	39.5	41.9	41.25	3	170	150	114	114	-	55	-	-
63	50.5	50.5	60	60	62.3	61.5	3	225	206	168	168	-	54	34	34